

Digestive system.

Worksheet: The Human Digestive System – Form, Function and Processes

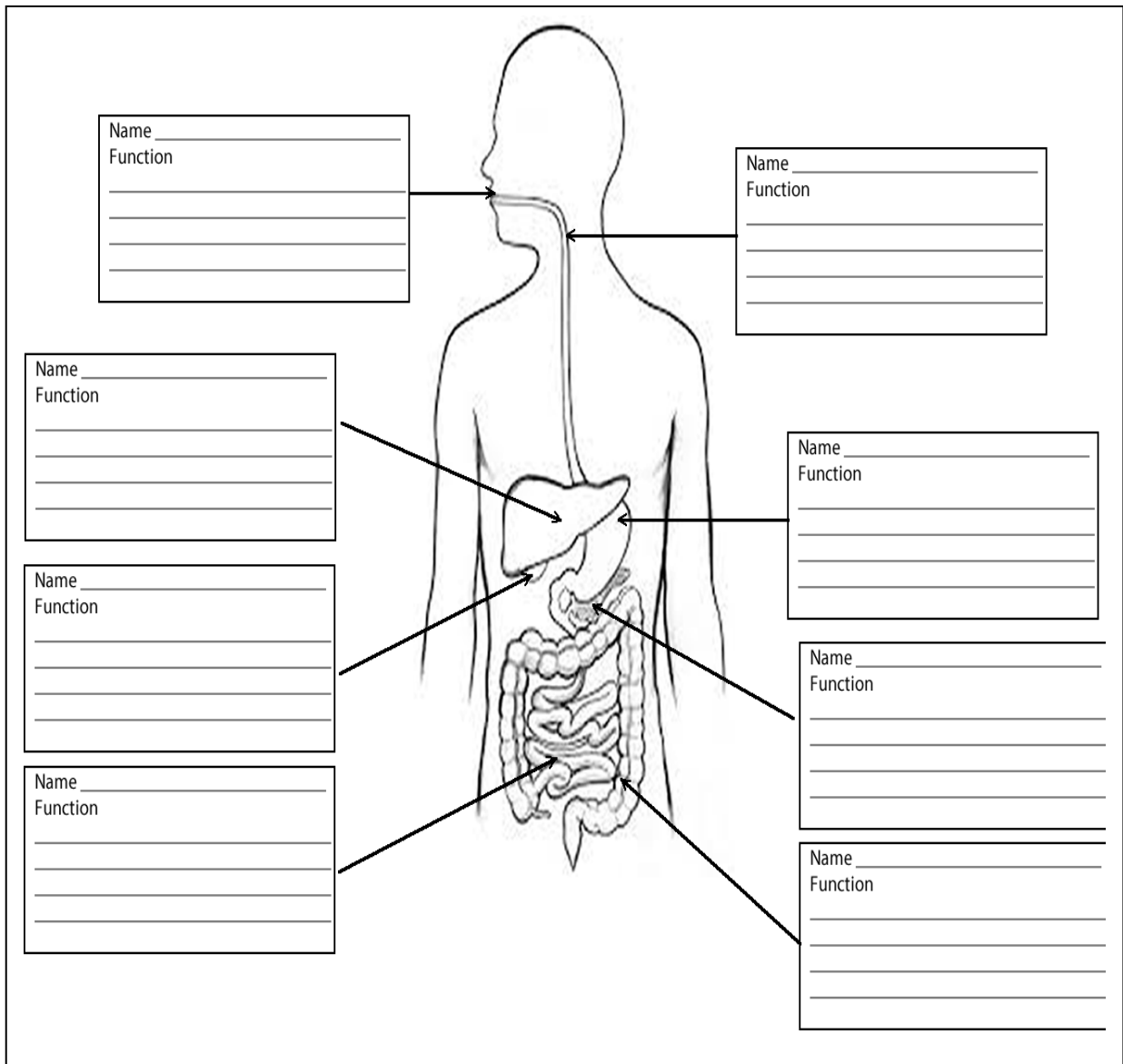
Part A – Multiple Choice (Circle the correct answer)

1. Which part of the digestive system is responsible for absorbing most of the nutrients?
 - A. Stomach
 - B. Small intestine
 - C. Large intestine
 - D. Liver
2. The role of the teeth is to:
 - A. Chemically digest proteins
 - B. Absorb nutrients
 - C. Physically break down food
 - D. Add bile to food
3. Which organ produces enzymes that break down carbohydrates, proteins and fats, but **does not directly touch the food**?
 - A. Small intestine
 - B. Pancreas
 - C. Liver
 - D. Stomach
4. What is the function of bile?
 - A. Absorbs nutrients
 - B. Breaks proteins into amino acids
 - C. Physically breaks down fats
 - D. Kills bacteria in the food
5. What organ stores bile made by the liver?
 - A. Pancreas
 - B. Stomach
 - C. Small intestine
 - D. Gall bladder
6. The small intestine is approximately:
 - A. 7 m long
 - B. 1.5 m long
 - C. 25 m long
 - D. 19 m long

Part B – Label the Diagram

Use these labels to complete the diagram and state the function of each labelled item in the box provided.

- Mouth
- Oesophagus
- Stomach
- Liver
- Small intestine
- Large intestine
- Pancreas
- Gall bladder



Part C – Fill in the Blanks

Complete the sentences with the correct word:

1. The _____ produces enzymes that help digest all types of nutrients and releases them into the small intestine.
2. The _____ churns and mixes food with acid, beginning protein digestion.
3. Nutrients are absorbed into the bloodstream through the walls of the _____.
4. The _____ is responsible for removing water from waste before it leaves the body.
5. The protease enzyme breaks down _____ into smaller particles called amino acids.

Part D – Short Answer Questions. Research if needed

1. **Describe how the mouth starts digestion. Include both physical and chemical changes.**

2. **Explain why the small intestine has a long, folded surface with villi.**

3. **Why is it important that food is broken into small molecules during digestion?**

4. **What is the difference between mechanical and chemical digestion? Give one example of each.**

Part F

20-Minute Classroom Task: Disease and Body System Breakdown

Task Title: "What Went Wrong?" — *Investigating a System-Based Disease*

Time: 20 minutes

Format: Pairs or small groups

Focus: Understanding how a disease/disorder affects a body system

Instructions:

1. Choose one disease or disability from the list below that affects a particular body system:

Disease/Disability	Body System Affected
--------------------	----------------------

Asthma	Respiratory system
--------	--------------------

Muscular dystrophy	Muscular system
--------------------	-----------------

Parkinson's disease	Nervous system
---------------------	----------------

Heart disease	Circulatory system
---------------	--------------------

Type 1 diabetes	Endocrine system
-----------------	------------------

Osteoporosis	Skeletal system
--------------	-----------------

2. Research and answer the following in your science book or worksheet (*short answer bullet points allowed*):
 - a. Which body system is affected?
 - b. What goes wrong in that system due to the disease/disability?
 - c. What symptoms does the person experience?
 - d. How does this disease or disability affect daily life?
 - e. Can it be treated or managed? If yes, how?
3. Prepare a short 1-minute "What Went Wrong" report to tell another group or the class:
 - Name of the disease
 - System it affects
 - One key symptom
 - One treatment or way it's managed